

Vertical element mounting (VEM)

Variant 1 - with V-UK

Variant 2 - with ADS



TONALITY® - Vertical element mounting



Vertical element mounting / portrait montage

Variant 1 - with V-UK



TONALITY® - Vertical element mounting



TONALITY® - mounted with V-UK / system with open vertical joint (at least 10mm) - all UK components are painted black

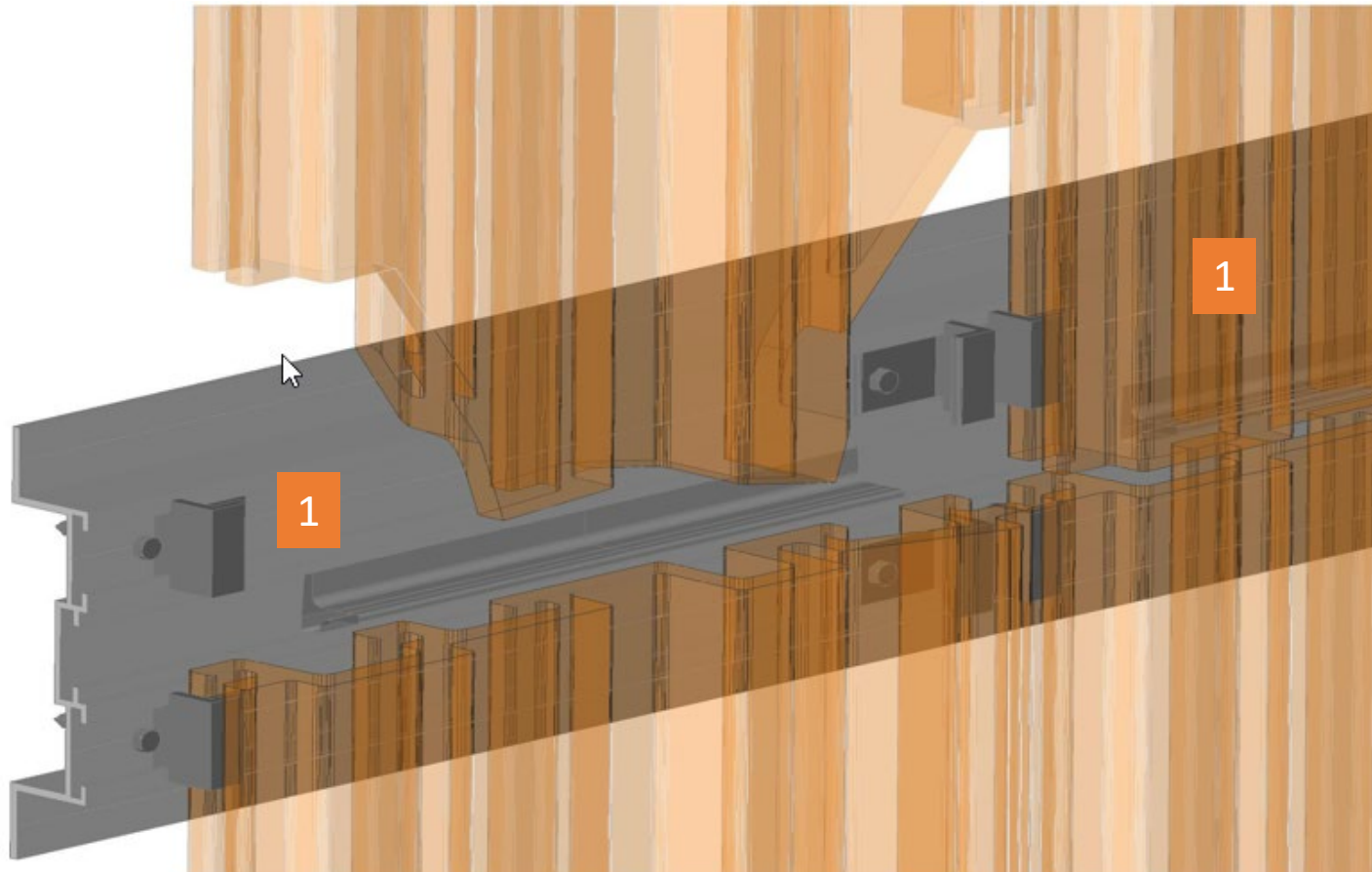
TONALITY® - Vertical element mounting

mounted with V-UK



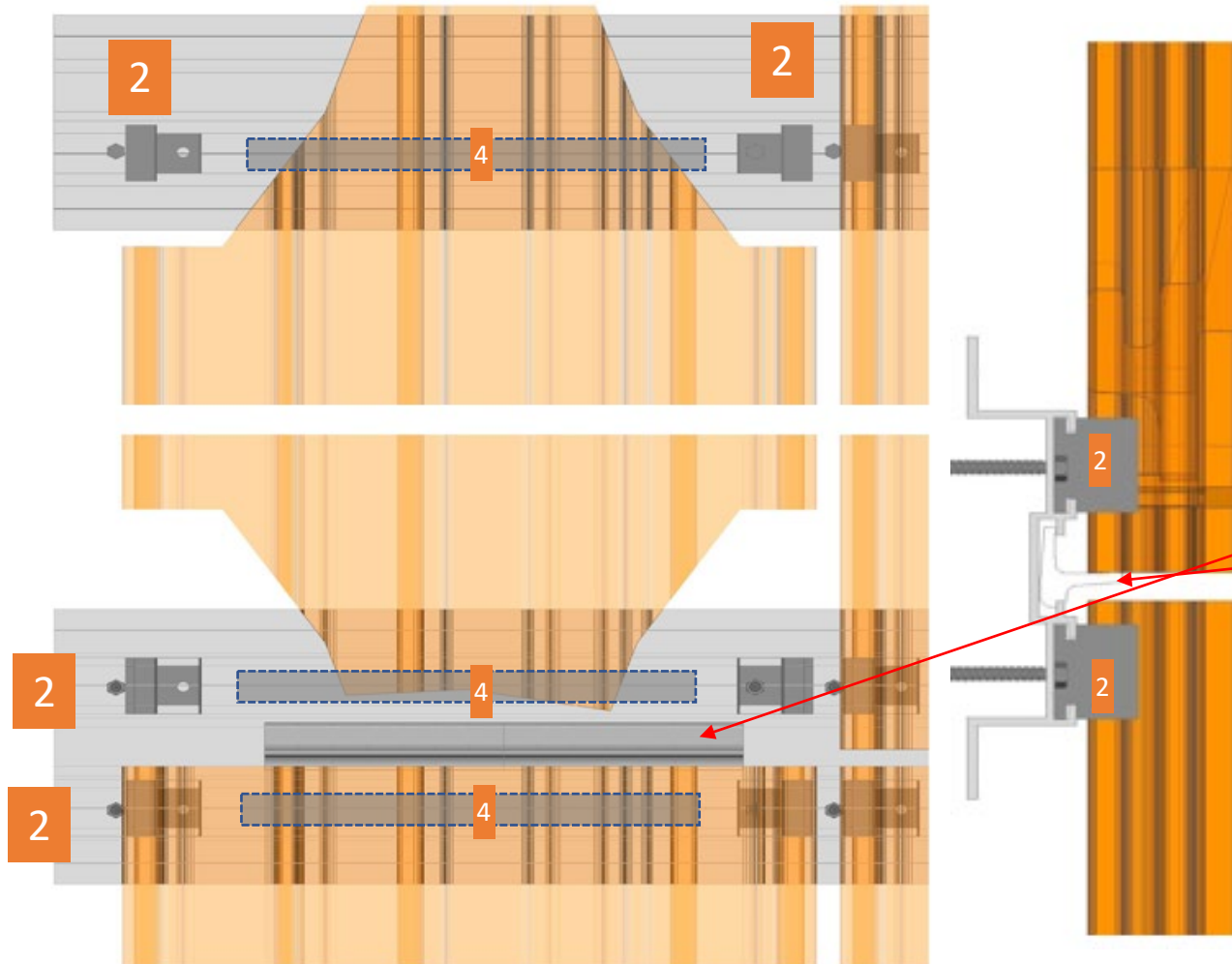
The operating principle:

- 1 The assembly takes place on Horizontal Aluminium profiles.



TONALITY[®] - Vertical element mounting

mounted with V-UK



The functional principle

- 2** Ceramics is fixed via element holder on the aluminium profiles
- 3** Load transfer of the dead weight of each ceramic element takes place via element carrier
- 4** Noise-causing movement (rattling) is prevented by rear EPDM profile (self-adhesive, fitted between the brackets).

TONALITY[®] - Vertical element mounting

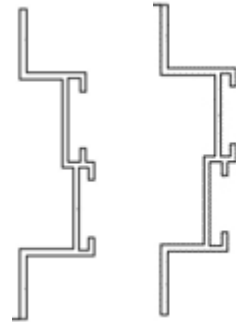
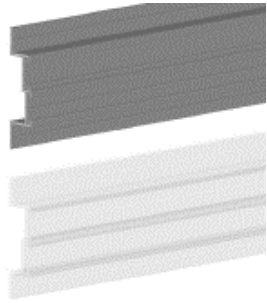
Product/benefit argumentation for the V-UK system

- ❖ One single substructure variant for all ceramic element widths
- ❖ Each ceramic element can be mounted rotated by 180° as desired
- ❖ Each ceramic element is interchangeable
- ❖ Non-visible fastening
- ❖ Simple assembly after brief instruction
- ❖ Short-term availability of the substructure as it is in stock

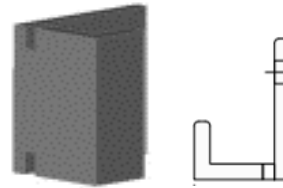
TONALITY® - Vertical element mounting



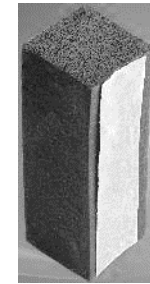
Vertical UK / individual components



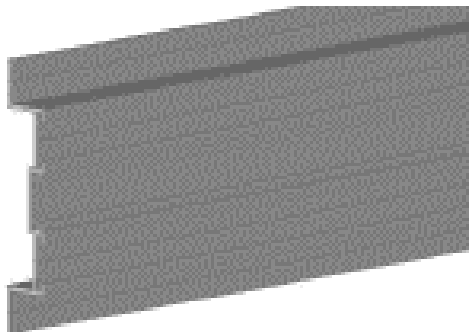
Bottom/top profile (U/O-P)



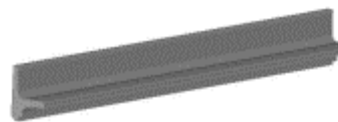
Ceramic holder (KH)



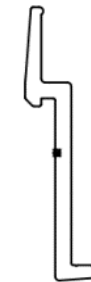
EPDM profile



Middle profile (MP)



Ceramic carrier (KT)

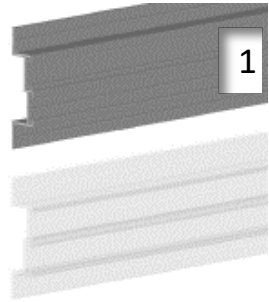


Ceramic carrier long (KT-L)

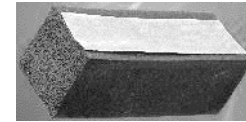
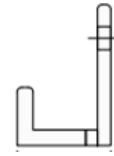
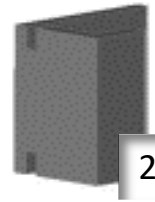
1 TONALITY® - Vertical element mounting



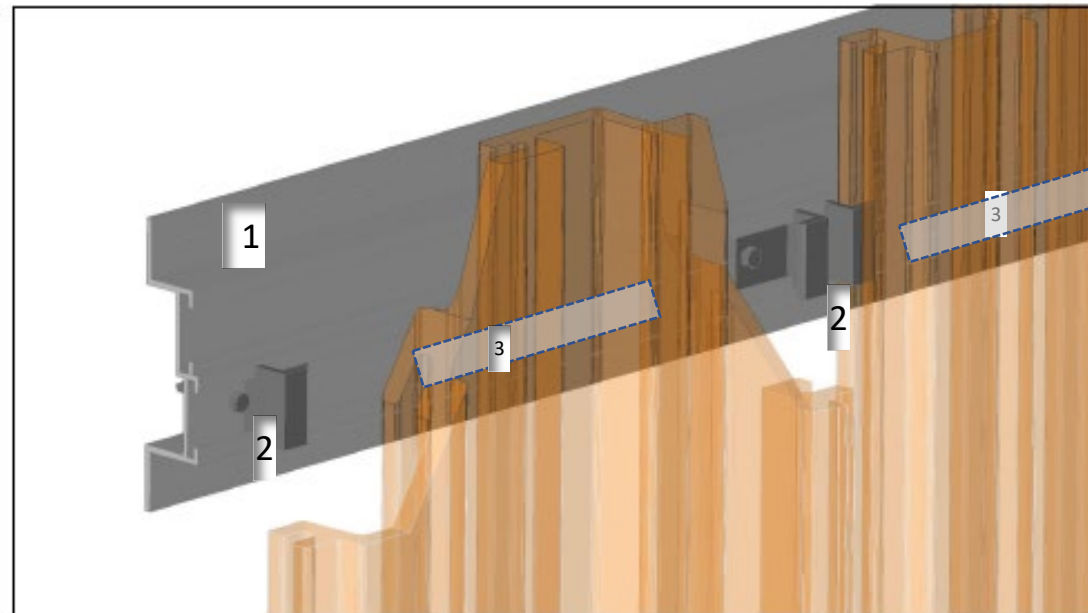
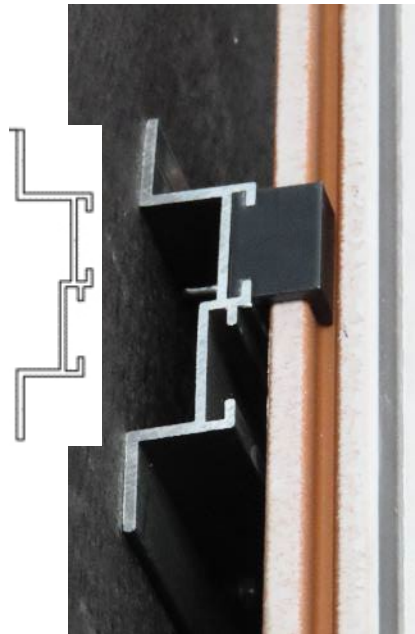
Vertical UK / individual components and their function



1 Bottom/top profile (U/O-P)

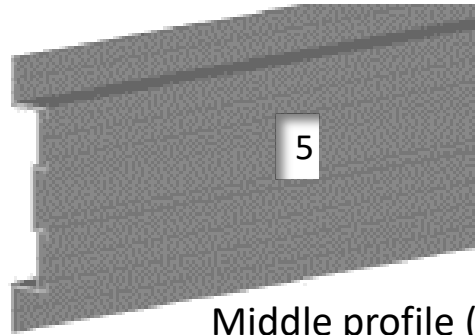


3

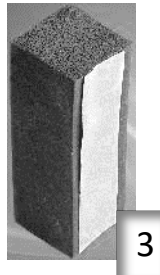
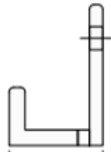
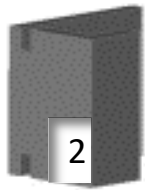


TONALITY® - Vertical element mounting

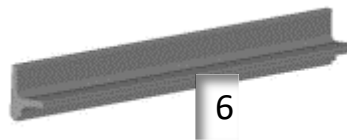
Vertical UK / individual components and their function



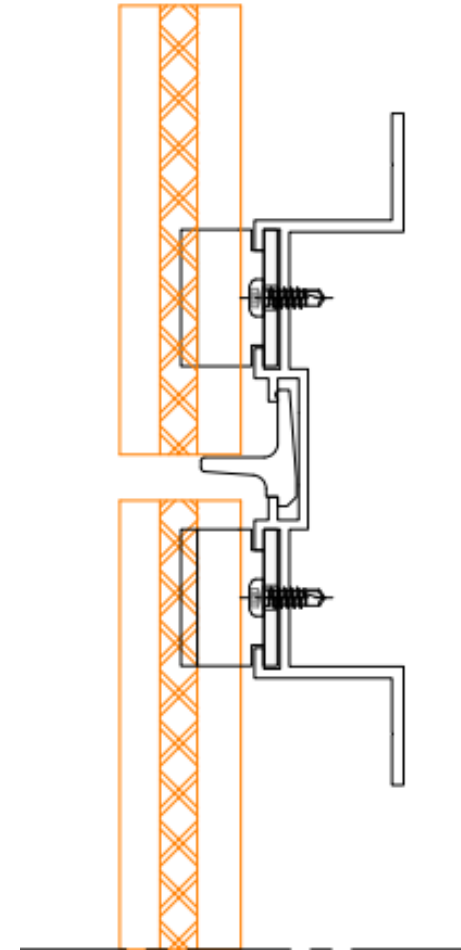
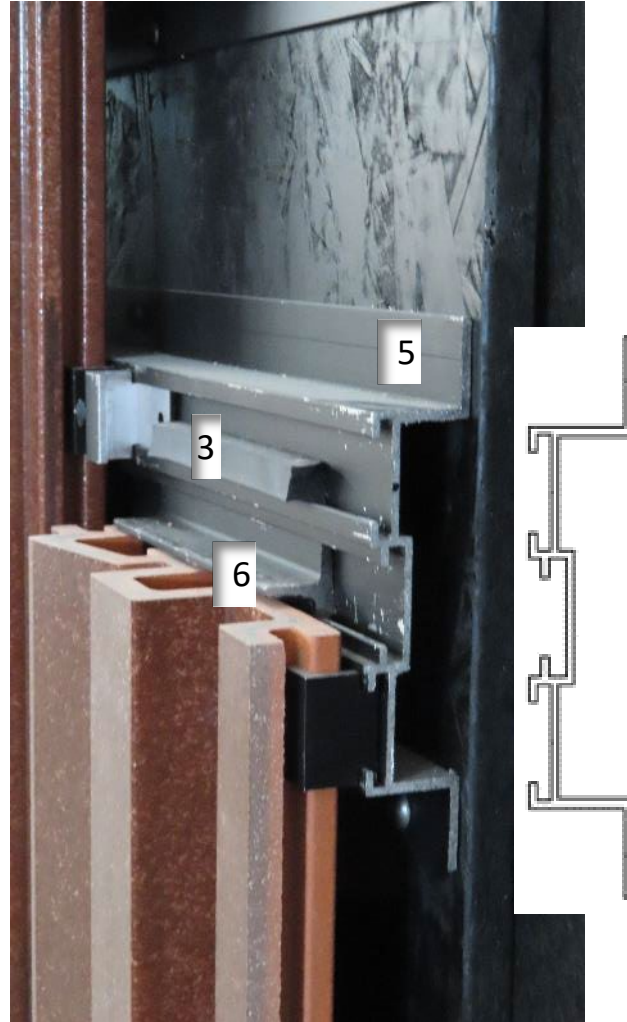
Middle profile (MP)



3

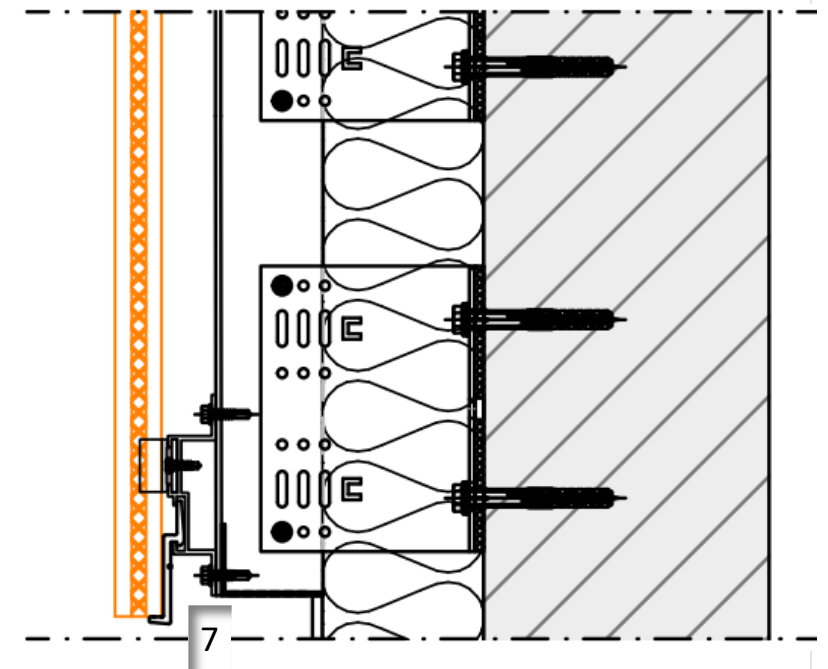
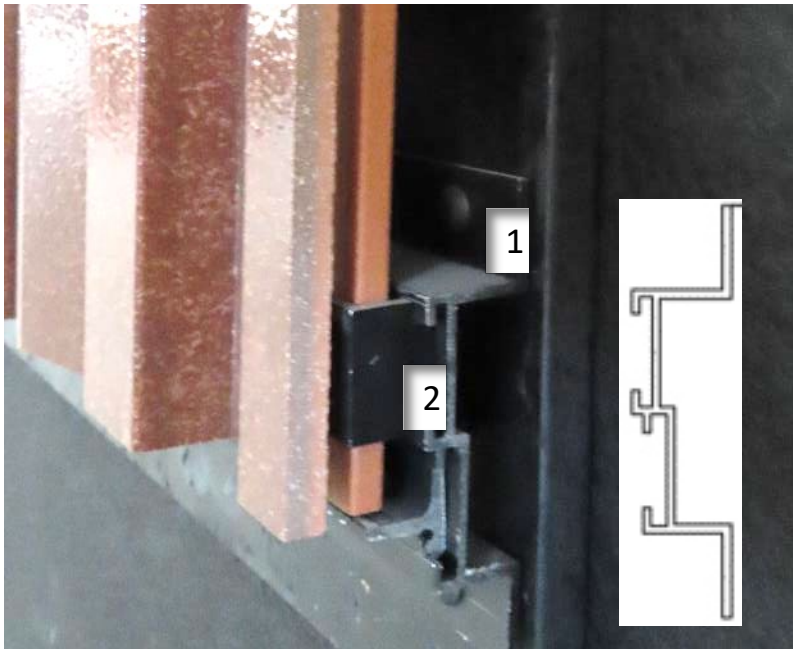
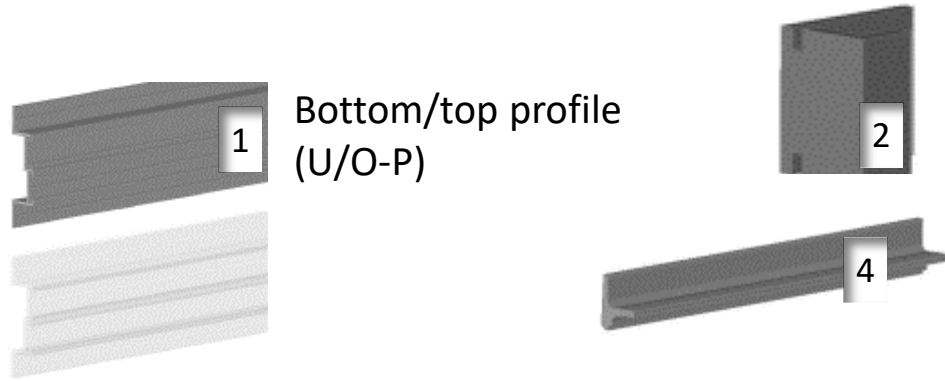


6



TONALITY[®] - Vertical element mounting

Vertical UK / individual components and their function



TONALITY[®] - Vertical element mounting

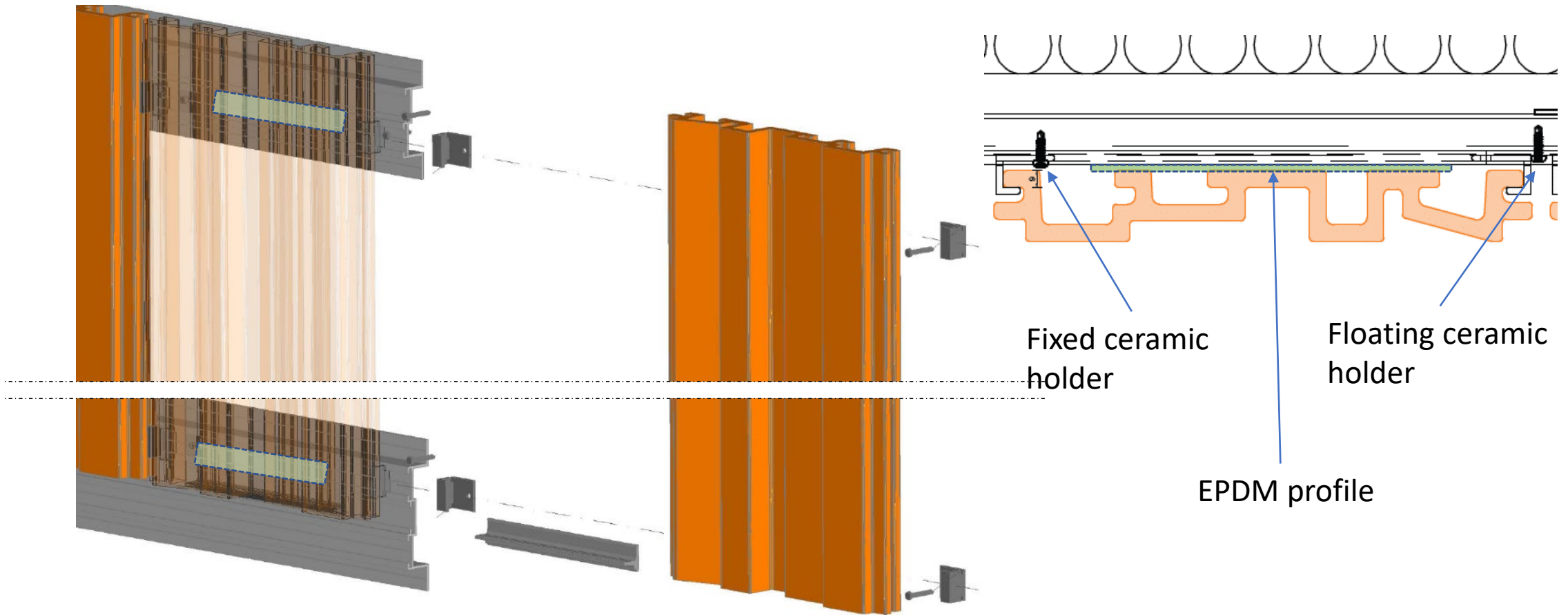
Vertical UK / Assembly steps

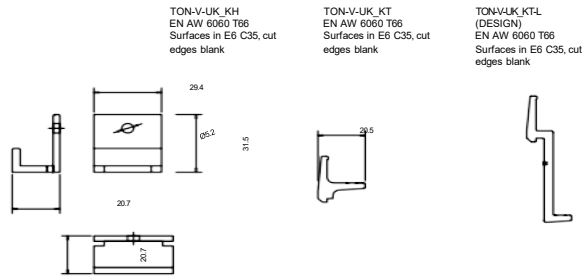
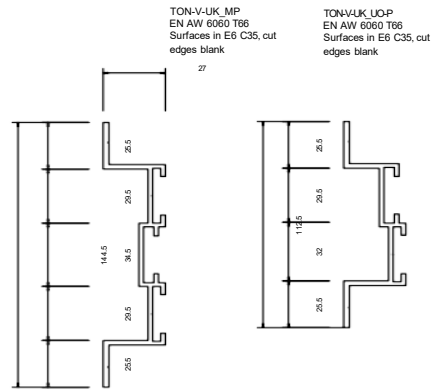
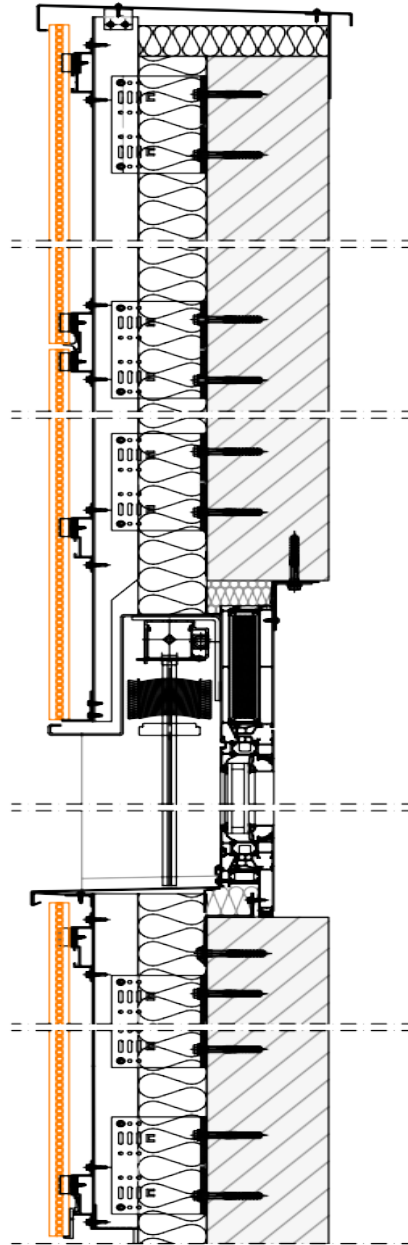
1. Assembly of the horizontal support profiles
2. Inserting the element holders
3. Cutting to size and gluing in the EPDM profiles (self-adhesive). *)
4. Inserting the element carriers *)
5. Assembly of the ceramic elements by screwing with the element holders

*) takes place during assembly element by element

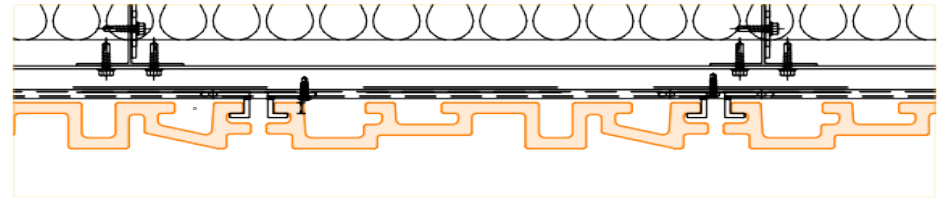
TONALITY[®] - Vertical element mounting

Vertical UK / Assembly steps

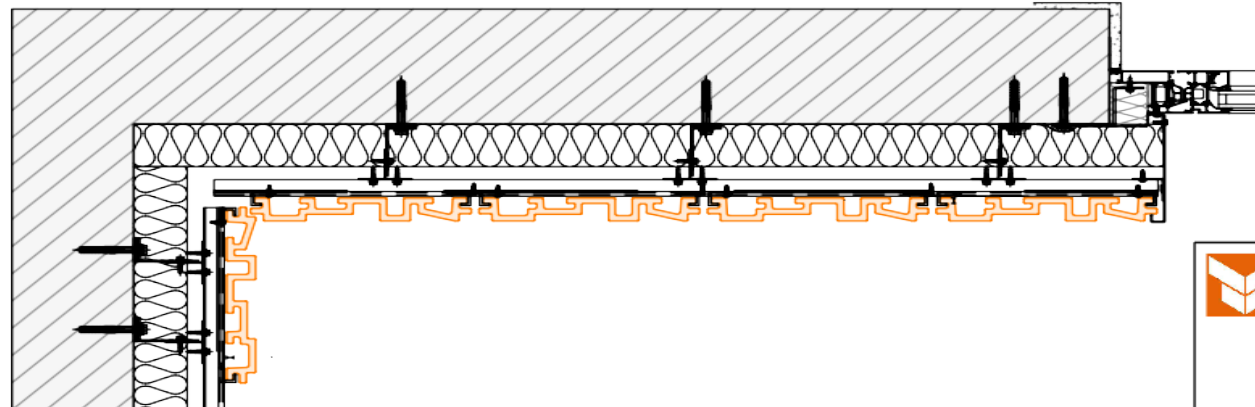
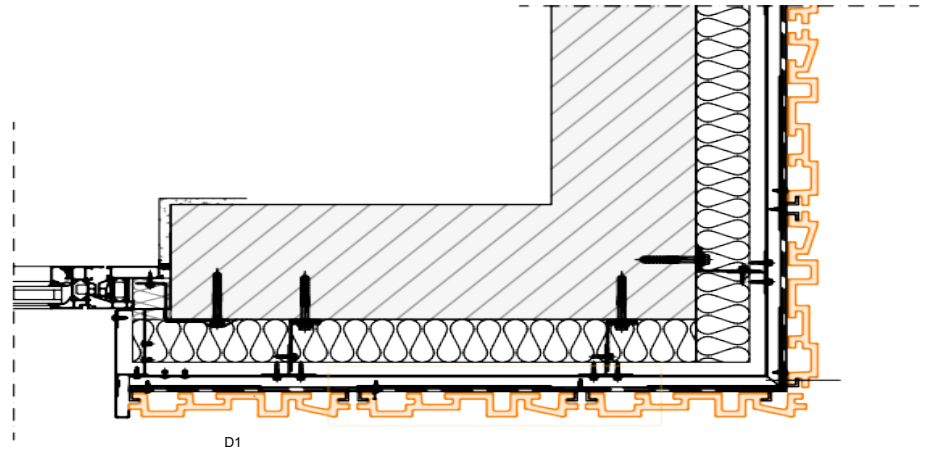




TON-V-UK - Individual parts



D1 - Fastening the agraffes



Vertical substructure
TON_V-UK_Overview

TONALITY® - Vertical element mounting



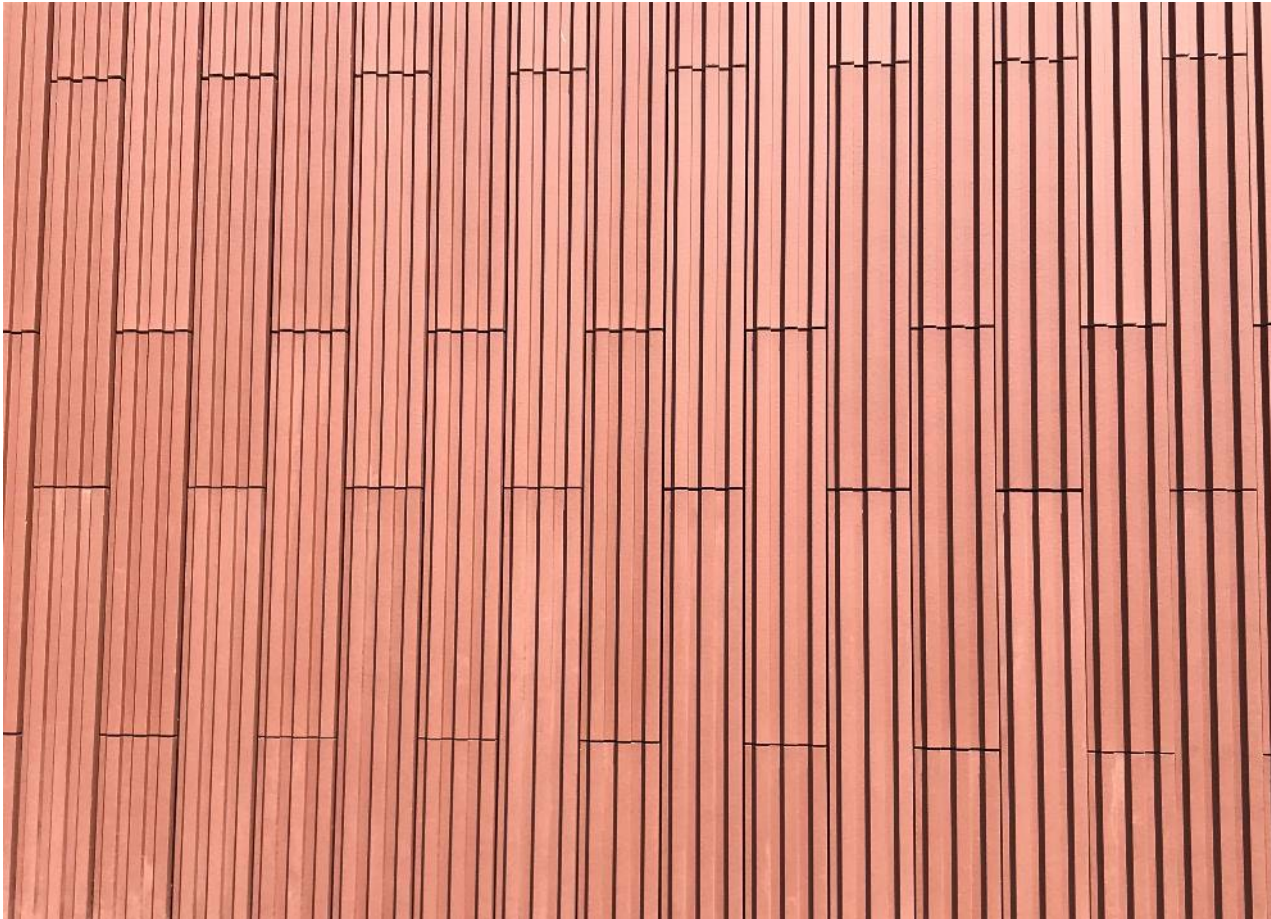
Examples executed with V-UK



TONALITY® - Vertical element mounting



Examples executed with V-UK



TONALITY® - Vertical element mounting



Vertical element mounting / portrait montage

Variant 2 - with ADS



TONALITY® - Vertical element mounting



TONALITY® - mounted with ADS /
System with closed vertical joint

TONALITY® - Vertical element mounting

ADS for vertical element positioning / individual components

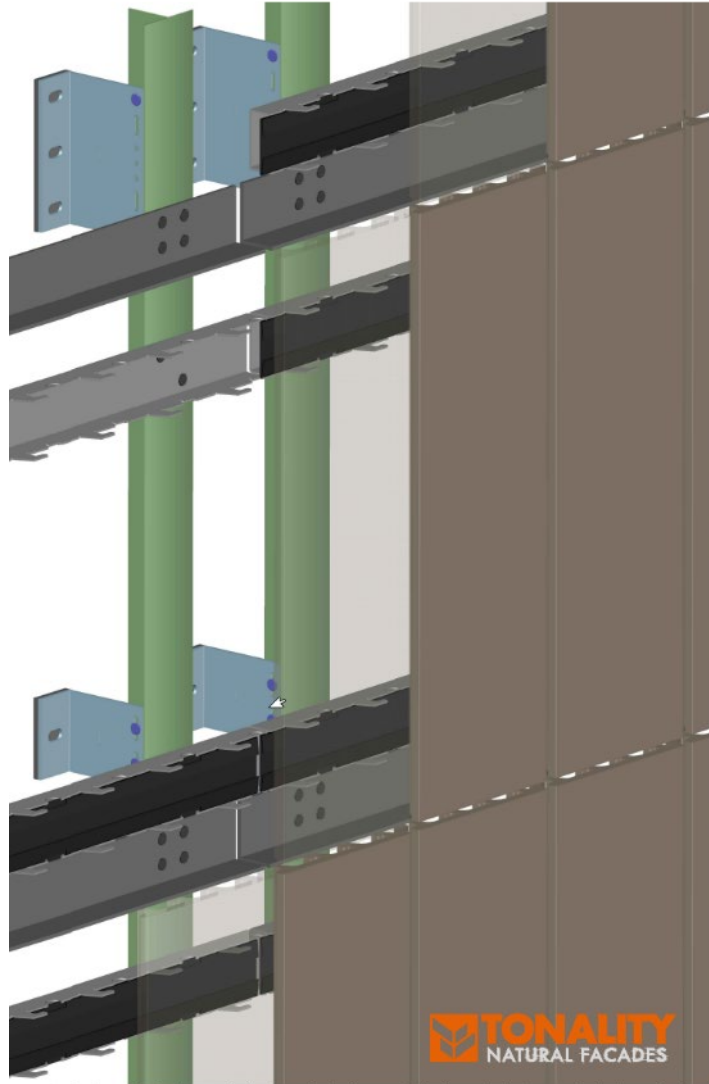
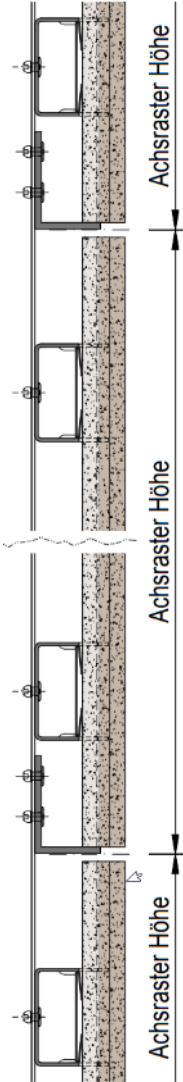


The operating principle:

- 1 Horizontal mounting of ADS-Profiles with the integrated hooks
- 2 The load transfer of the dead weight of the ceramic elements is carried out via a separately mounted L-profile, 5 mm thick (must be statically calculated).
- 3 Noise-causing movement (rattling) is prevented by the inserted joint spring with the integrated safety clips.
- 4 The safety clips are a mechanical securing against lateral slipping.

TONALITY® - Vertical element mounting

ADS for vertical element positioning / individual components



TONALITY[®] - Vertical element mounting

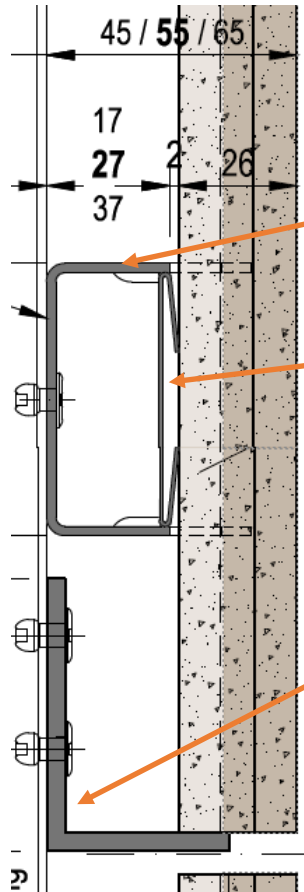
ADS for vertical element positioning / individual components

Product/benefit argumentation for the ADS system

- ❖ Closed vertical joint
- ❖ Only 3 system components
- ❖ Simple assembly after brief instruction
- ❖ Non-visible fastening

TONALITY® - Vertical element mounting

ADS for vertical element positioning / individual components



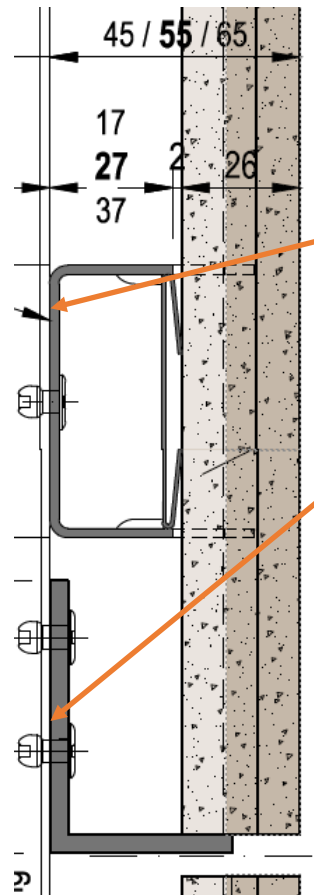
1. ADS support profile with integrated retaining hooks

2. ADS end spring with integrated safety clips

3. L-profile (approx. 5mm thick) according to simple static calculation

TONALITY[®] - Vertical element mounting

ADS for vertical element positioning / steps of mounting

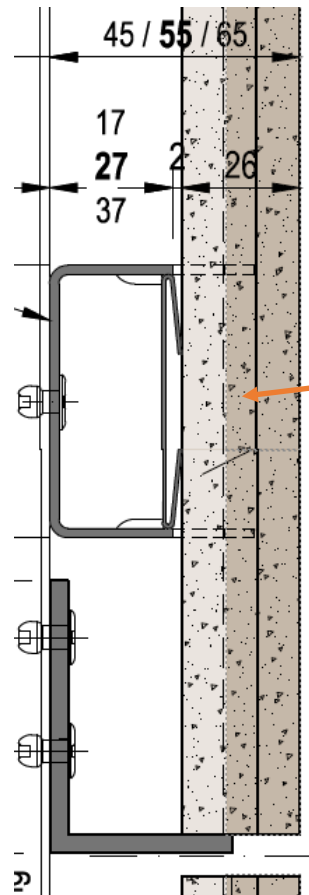


1. Assembly of the horizontally running ADS support profiles and L-profiles

TONALITY® - Vertical element mounting



ADS for vertical element positioning / steps of mounting

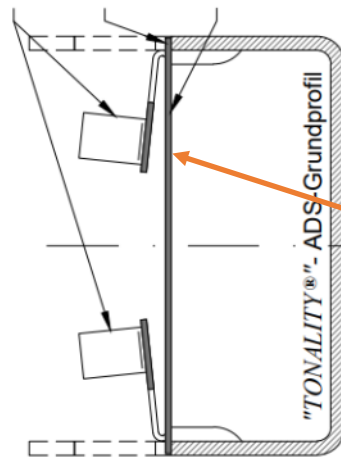


2. placing and inserting the ceramic elements

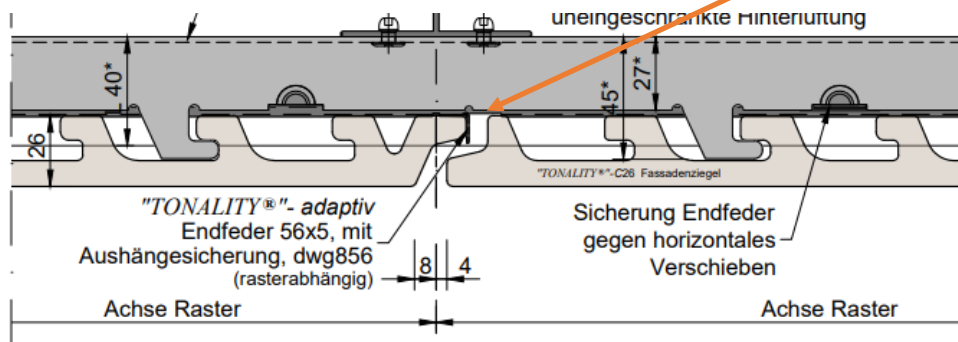
TONALITY® - Vertical element mounting



ADS for vertical element positioning / steps of mounting



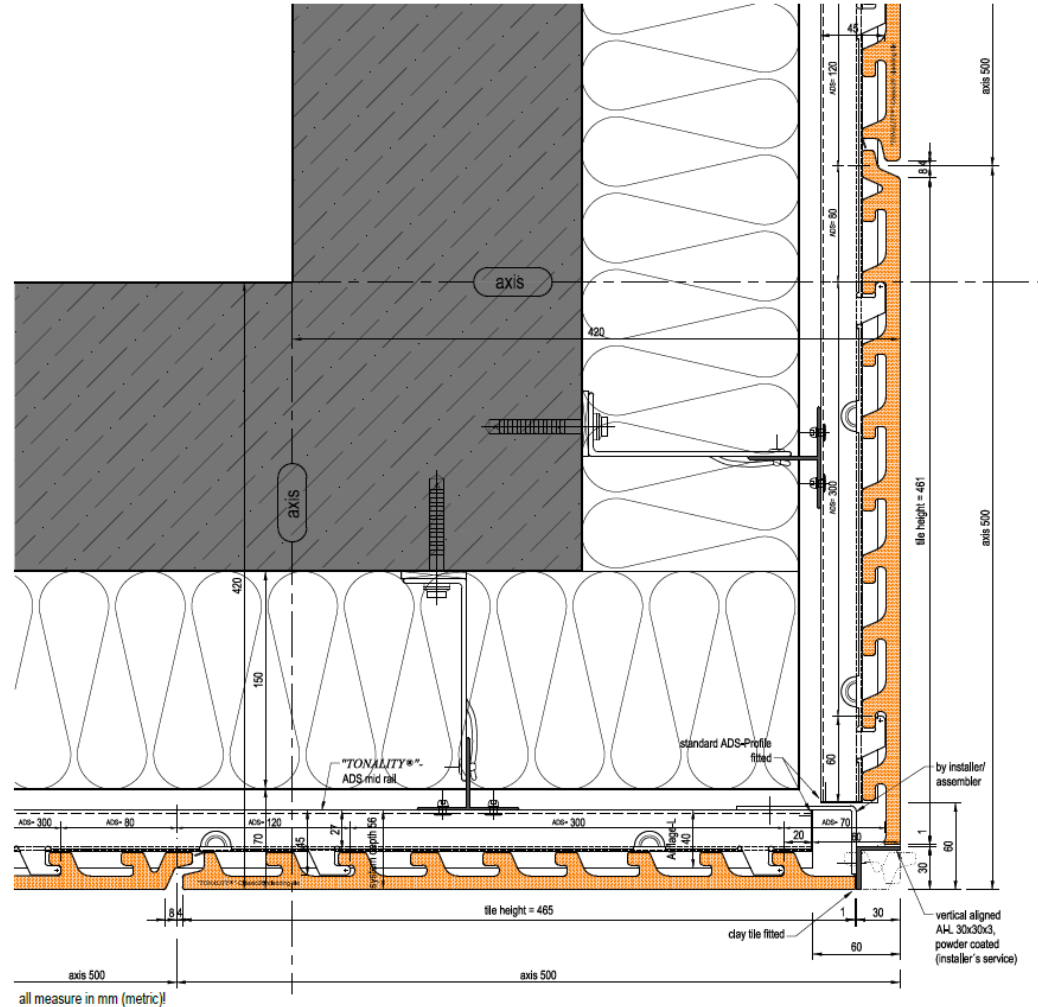
3. bending the safety clip



TONALITY® - Vertical element mounting

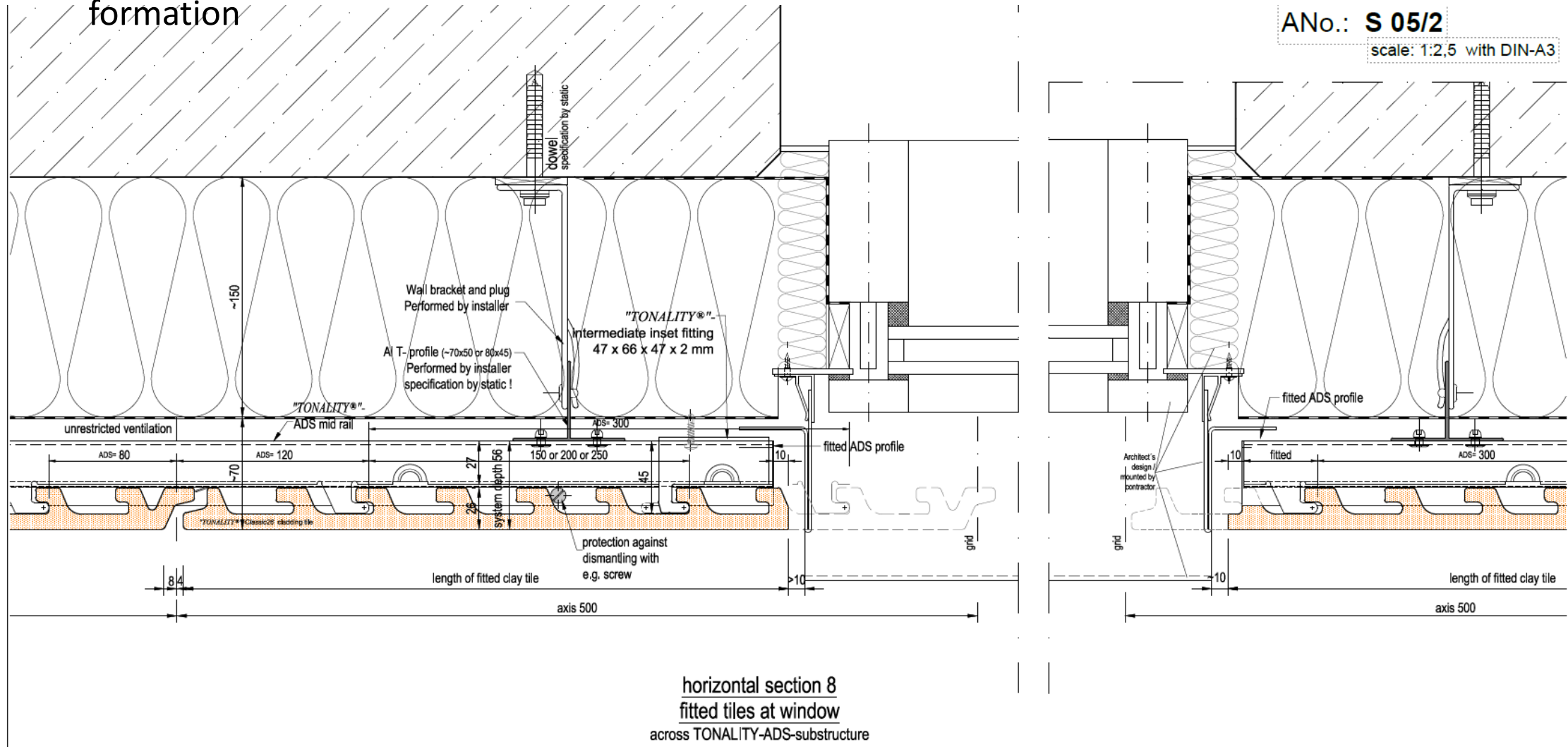


ADS for vertical element positioning / detail for corner formation



TONALITY[®] - Vertical element mounting

ADS for vertical element positioning / detail for window connection
formation

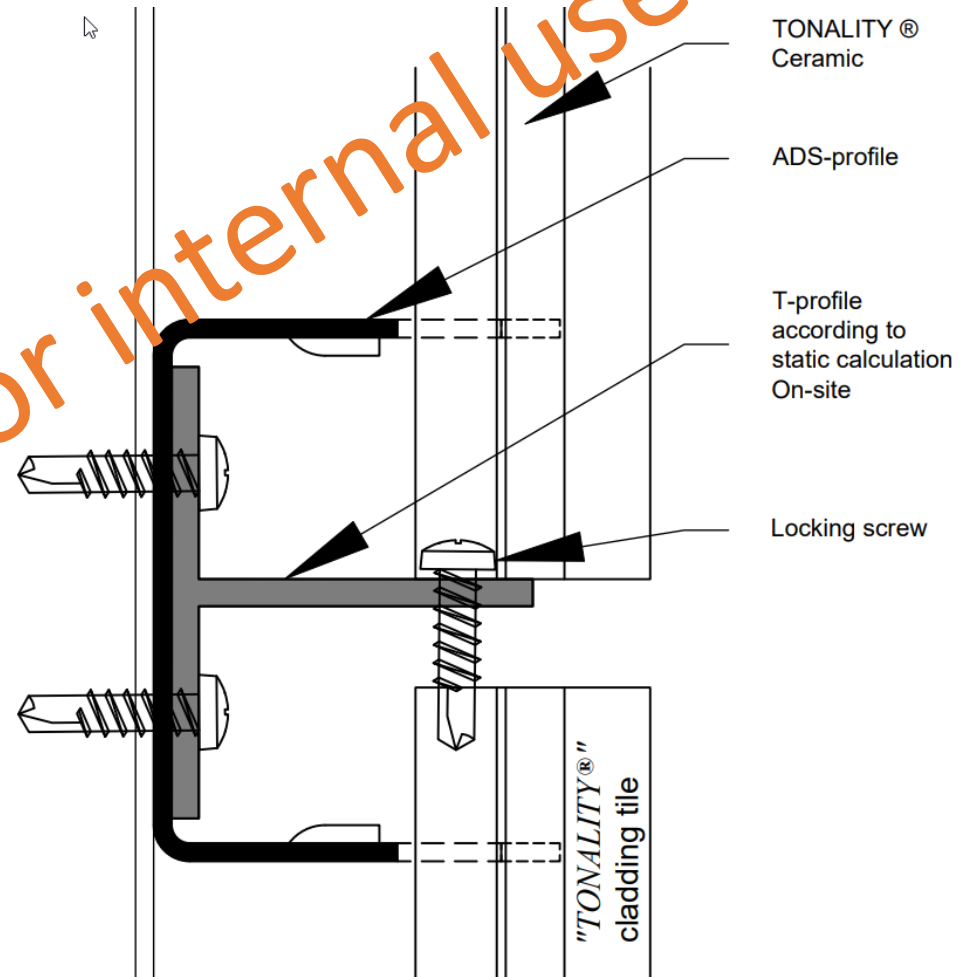
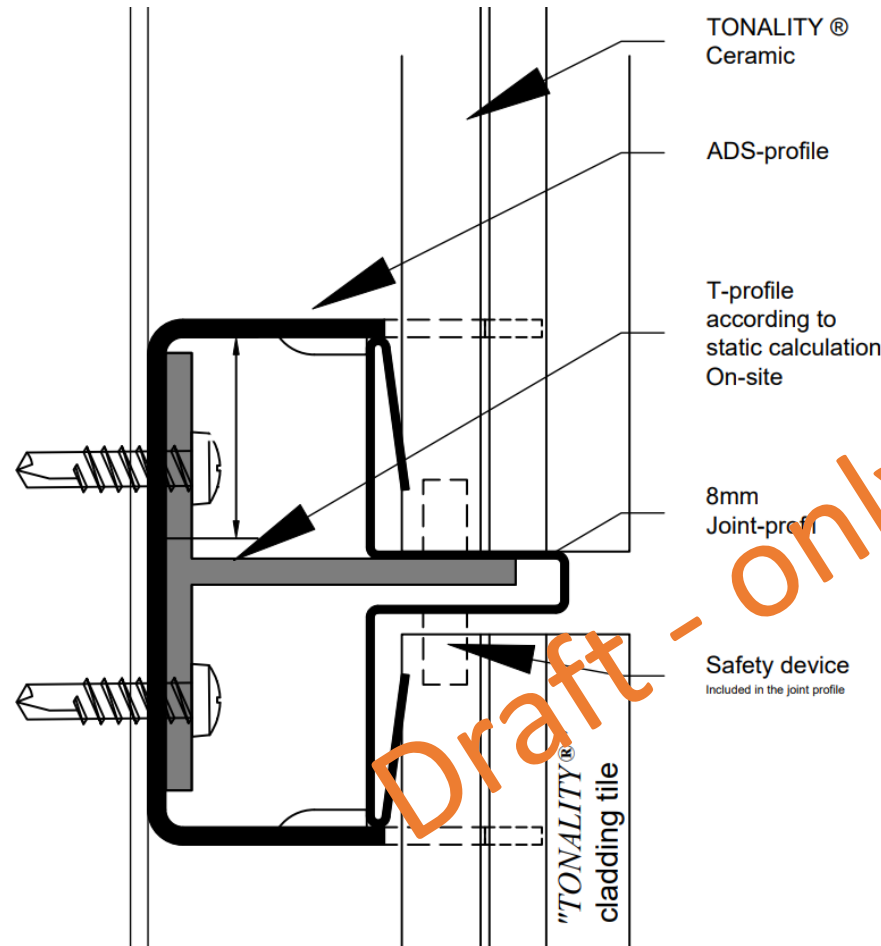


horizontal section 8
fitted tiles at window
across TONALITY-ADS-substructure

TONALITY® - Vertical element mounting



ADS for vertical element positioning / optimisation under development

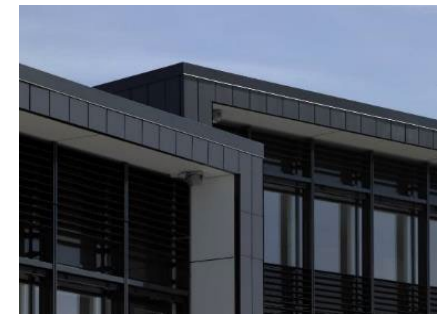
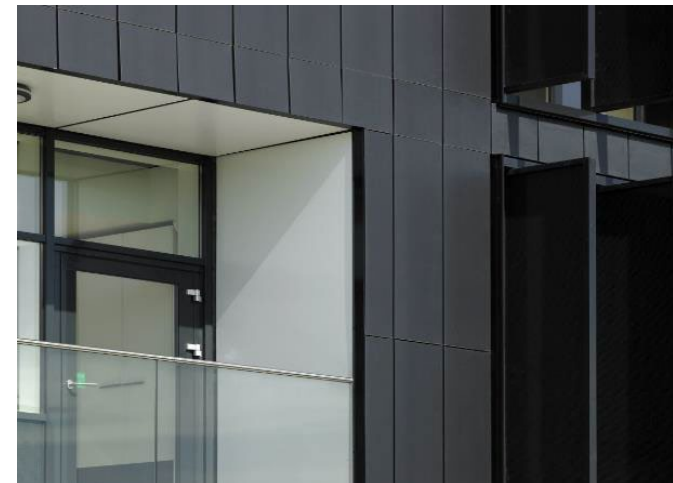


Draft - only for internal use

TONALITY® - Vertical element mounting



ADS for vertical element positioning / Officebuilding in Viborg/Denmark



30

TONALITY | Welcome to the
TONALITY® facade world



Pure aesthetics for unique facades

30

TONALITY® - Vertical element mounting



ADS for vertical element positioning / Office Building in Viborg/Denmark



TONALITY® - Vertical element mounting



ADS for vertical element positioning / Appartements in Zagreb / Croatia

